

Drain: SPRINGMILL POND DRAIN **Drain #:** 240
Improvement/Arm: SPRINGMILL POND-SECTION 3
Operator: JDH **Date:** 7-12-04
Drain Classification: Urban/Rural **Year Installed:** 1991

GIS Drain Input Checklist

- Pull Source Documents for Scanning JDH
- Digitize & Attribute Tile Drains NA
- Digitize & Attribute Storm Drains JDH
- Digitize & Attribute SSD JDH
- Digitize & Attribute Open Ditch JDH
- Stamp Plans JDH
- Sum drain lengths & Validate JDH
- Enter Improvements into Posse JDH
- Enter Drain Age into Posse _____
- Sum drain length for Watershed in Posse _____
- Check Database entries for errors JDH



SURVEYOR'S OFFICE

Hamilton County

Kenton C. Ward, Surveyor

776-9626

942 Maple Avenue

Noblesville, Indiana 46060

August 12, 1991

TO: Hamilton County Drainage Board

RE: Springmill Ponds Drain-Section 3

Attached is a petition, non-enforcement request, plans, calculations, quantity summary and assessment roll for the Springmill Ponds Drain-Section 3.

I have reviewed the submittals and petition and have found each to be in proper form.

I have made a personal inspection of the land described in the petition. Upon doing so, I believe that the drain is practicable; will improve the public health; benefit a public highway and be of public utility; and that the costs, damages and expenses of the proposed drain will probably be less than the benefits accruing to the owners of land likely to be benefitted. The drain will consist of the following:

6"	SSD	9220ft	18"	RCP	411ft
8"	CMP	20ft	21"	RCP	54ft
12"	RCP	502ft	24"	RCP	898ft
15"	RCP	43ft	27"	RCP	426ft

Dual 36" RCP 150ft Open Swale 1650ft

The total length of the drain will be 13,374 feet.

The open swale noted in the above lengths is that swale along the South side of 146th Street and running North to the pond in Village Farms. This swale runs along the North side of Lots 204 and 205 of Village of Mount Carmel, Section 8 and the East side of Lots 347, 348, 349 and 350 of Village Farms, Section 5. The dual 36" RCP is that which crosses under 146th Street at the North East corner of Lot 204, Village of Mount Carmel, Section 8.

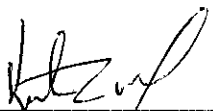
The SSD shown above includes the 6" SSD under curbs and the SSD in the rear of the following lots: 83 to 90; 91 to 94; 96,97,98,99, 101,102,123,129,121,122,77 to 81 and 119 Only the main subsurface drain will be maintained. The laterals off the main line are private drains and will not be maintained as part of the regulated drain.

Lots 82 thru 91 may also be assessed for reconstruction or construction of the Springmill Crossing, or the Village of Mount Carmel Drains. However, for maintenance purpose, these lots are proposed to be assessed to the Springmill Ponds Drain only. All lots at some time in the future may also be assessed for reconstruction or maintenance of the Overman-Harvey Drain.

I have reviewed the plans and believe the drain will benefit each lot equally. Therefore, I recommended each lot be assessed equally. I recommend a maintenance assessment of \$25.00 per lot, \$5.00 per acre for roadways. With this assessment the total

annual assessment for the drain/this section will be \$ ^{1182⁰⁰} ~~4482.86~~

I recommend a hearing be set for October 1991. At that time I recommend the non-enforcement request be approved by the Board.



Kenton C. Ward
Hamilton County Surveyor

KCW/no
cc: file

STATE OF INDIANA)
)
COUNTY OF HAMILTON)

TO: HAMILTON COUNTY DRAINAGE BOARD
% Hamilton County Surveyor, Courthouse, Noblesville, IN 46060

In the matter of Springmill Ponds Subdivision,
Section III Drain Petition.

Petitioner is the owner of all lots in the land affected by the proposed new regulated drain. The drainage will affect various lots in _____, a subdivision in Hamilton County, Indiana. The general route of such drainage shall be in existing easements and along public roads as shown in the plans on file in the Surveyor's Office.

Petitioner believes that the cost, damages and expenses of the proposed improvement will be less than the benefits which will result to the owners of the land likely to be benefited thereby. Petitioner believes the proposed improvements will:

- (a) improve public health
- (b) benefit a public street
- (c) be of public utility

Petitioner agrees to pay the cost of construction of the drainage system and requests periodic maintenance assessments by the Board thereafter.

The Petitioner also agrees to the following:

1. To provide the Drainage Board a Performance Bond for the portion of the drainage system which will be made a regulated drain. The bond will be in the amount of 100% of the Engineers estimate. The bond will be in effect until construction of 100% of the system is completed and so certified by the Engineer.
2. The Petitioner shall retain an Engineer throughout the construction phase. At completion of the project the Petitioner's Engineer shall certify that the drainage system which is to be maintained as a regulated drain has been constructed as per construction plans.

- 3. The Petitioner agrees to request in writing to the County Surveyor any changes from the approved plan and must receive written authorization from the County Surveyor prior to implementation of the change. All changes shall be documented and given to the Surveyor to be placed in the Drain File.
- 4. The Petitioner shall instruct his Engineer to provide a reproducible print on a 24" x 36" mylar of the final design of the Drainage System. This shall be submitted to the County Surveyor prior to the release of the Performance Bond.
- 5. The Petitioner shall comply with the Erosion Control Plan as as specified on the construction plans. Failure to comply with the Erosion Control Plan shall be determined by the Board as being an obstruction to the drainage system. The County Surveyor shall immediately install or repair the needed measures at Petitioners cost as per IC 36-9-27-46.

The Petitioner further requests that the Drain be classified as an Urban Drain.

DAVE DEVELOPMENT, INC.
 BY: *Jeff Kennelly*
 Signed _____

JEFF KENNELLY
 Printed Name _____

N/A
 Signed _____

Printed Name _____

RECORDED OWNER(S) OF LAND INVOLVED

DATE *July 18, 1991*

UNION STATE BANK

21 Jefferson Square • P. O. Box ~~298~~ 1710 • Carmel, Indiana 46032

TELEPHONE
AREA CODE 317
846-7381

IRREVOCABLE
LETTER OF CREDIT NO. **1102**

DATE August 5, ~~XXXX~~ 1991

BENEFICIARY

Hamilton County Commissioners
and City of Carmel
Hamilton County Courthouse
Noblesville, Indiana 46060

FOR ACCOUNT OF

Dart Development, Inc.
1841 Ludlow Avenue
Indianapolis, Indiana 46201

Storm Sewers - Springmill Ponds
Section III

GENTLEMEN:

WE HEREBY ESTABLISH OUR CREDIT IN YOUR FAVOR, FOR THE ACCOUNT INDICATED ABOVE, FOR A SUM OR SUMS NOT EXCEEDING AN AGGREGATE AMOUNT OF Forty Six Thousand Two Hundred and no/100 Dollars (\$46,200.00)

FUNDS ARE AVAILABLE BY YOUR DRAFT(S) AT Carmel, Indiana DRAWN ON UNION STATE BANK
UNION STATE BANK, P. O. Box 1710, Carmel, Indiana 46032

Drafts are to be accompanied by:

Original Letter of Credit

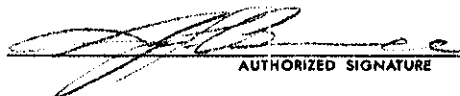
Beneficiary's signed certificate stating that the applicant has failed to construct the necessary storm sewers at the applicant's Springmill Ponds, Section III Subdivision.

ALL DRAFTS DRAWN UNDER THIS LETTER OF CREDIT ARE TO BE ENDORSED HEREON AND SHALL BEAR THE CLAUSE "DRAWN UNDER UNION STATE BANK LETTER OF CREDIT No. (AS INDICATED ABOVE)," and must be drawn and presented on or before August 5, 1992

WE HEREBY AGREE WITH YOU THAT ALL DRAFTS DRAWN UNDER AND IN COMPLIANCE WITH THE TERMS OF THIS LETTER OF CREDIT WILL BE DULY HONORED UPON PROPER PRESENTATION.

Except as otherwise expressly stated herein this Credit is subject to the Uniform Customs and Practice for Documentary Credits (1983 Revision), International Chamber of Commerce, Publication ~~290~~ 400.

VERY TRULY YOURS,


AUTHORIZED SIGNATURE

George F. Burrell, President

TITLE

Handwritten initials

UNION STATE BANK

21 Jefferson Square • P. O. Box 1710 • Carmel, Indiana 46032

TELEPHONE
AREA CODE 317
846-7381

IRREVOCABLE
LETTER OF CREDIT NO. **1103**

DATE August 5, 1991

BENEFICIARY

Hamilton County Commissioners
and city of Carmel
Hamilton County Courthouse
Noblesville, Indiana 46060

FOR ACCOUNT OF

Dart Development, Inc.
1841 Ludlow Avenue
Indianapolis, Indiana 46201

Sub-surface Drains - Springmill Ponds
Section III

GENTLEMEN:

WE HEREBY ESTABLISH OUR CREDIT IN YOUR FAVOR, FOR THE ACCOUNT INDICATED ABOVE, FOR A SUM OR SUMS NOT EXCEEDING AN AGGREGATE AMOUNT OF **Eighteen Thousand Five Hundred Fifty and no/100 Dollars (\$18,550.00)**

FUNDS ARE AVAILABLE BY YOUR DRAFT(S) AT Carmel, Indiana
UNION STATE BANK, P. O. Box 1710, Carmel, Indiana 46032

DRAWN ON UNION STATE BANK

Drafts are to be accompanied by:

Original Letter of Credit

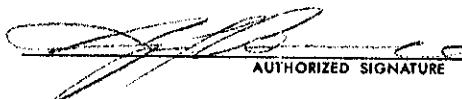
Beneficiary's signed certificate stating that the applicant has failed to construct the necessary sub-surface drains at the applicant's Springmill Ponds, Section III Subdivision.

ALL DRAFTS DRAWN UNDER THIS LETTER OF CREDIT ARE TO BE ENDORSED HEREON AND SHALL BEAR THE CLAUSE "DRAWN UNDER UNION STATE BANK LETTER OF CREDIT No. (AS INDICATED ABOVE)," and must be drawn and presented on or before **August 5, 1992**

WE HEREBY AGREE WITH YOU THAT ALL DRAFTS DRAWN UNDER AND IN COMPLIANCE WITH THE TERMS OF THIS LETTER OF CREDIT WILL BE DULY HONORED UPON PROPER PRESENTATION.

Except as otherwise expressly stated herein this Credit is subject to the Uniform Customs and Practice for Documentary Credits (1974 Revision), International Chamber of Commerce, Publication **250**, 400.

VERY TRULY YOURS,


AUTHORIZED SIGNATURE

George F. Burrell, President

TITLE

CERTIFICATE OF COMPLETION AND COMPLIANCE

TO: HAMILTON COUNTY SURVEYOR

RE: Springmill Ponds Section III

I hereby certify that:

- 1.) I am a Registered Land Surveyor in the State of Indiana,
- 2.) I am familiar with the plans and specifications for the above referenced subdivision,
- 3.) I have personally observed and supervised the completion of the Drainage Facilities for the above referenced subdivision, and
- 4.) To the best of my knowledge, information and belief, the Drainage Facilities within the subdivision has been installed and completed in conformity with all plans and specifications.

Signature: Stephen E. Bourquein Date: June 10, 1992

Type or Printed Name: Stephen E. Bourquein

Business Address: MSE Corporation

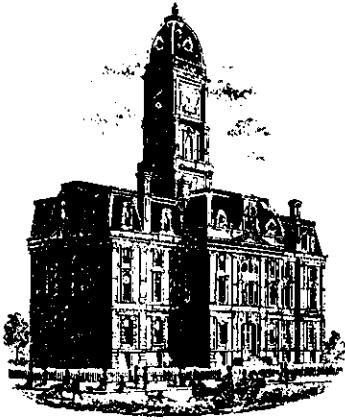
501 Congressional Blvd., Suite 110, Carmel, IN 46032

Telephone: (317) 843 5080



INDIANA REGISTRATION NUMBER

S0441



SURVEYOR'S OFFICE
Hamilton County

Kenton C. Ward, Surveyor

Phone (317) 776-8495

Fax (317) 776-9628

Suite 146

One Hamilton County Square

Noblesville, Indiana 46060-2230

October 17, 1996

TO: Hamilton County Drainage Board

RE: Springmill Ponds Drain-Springmill Ponds Section 3

Attached are As-Builts, Certificate of Completion and Compliance, and other information for Springmill Pond Drain-Springmill Ponds Section 3. An inspection of the drainage facilities for this section has been made and the facilities were found to be complete and acceptable.

During construction, changes were made to the drain which will alter the plans submitted with my report for this drain dated August 12, 1991. The changes are as follows:

STR 154-156 was missed on the original report. This structure consists of 12" RCP at a length of 42 feet.* STR 134-135 consists of 24" RCP, which was shortened from 169 feet to 168 feet.* Structure ~~159~~¹⁶² to ~~166~~¹⁶⁷ consist of 24" RCP which was shortened from 51 feet to 57 feet of 24" RCP. Structure 167 to 166 consist of 24" RCP which was shortened from 184 feet to 181 feet.* Structure 145 to 146 consists of 24" RCP which was shortened from 139 feet to 137 feet.* Structure 141 to 142 which consists of 27" RCP, which was shortened from 82 feet to 62 feet.*

NOTE: The open ditch on the North side of 146th Street that runs through Village Farms Section 7 is a part of the Overman-Harvey Drain-see report dated October 15, 1993.

The length of the drain due to the changes described above is now 13,395 feet.

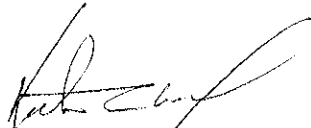
13,396'

The non-enforcement request was approved by the Board at its meeting on October 21, 1991.

The bonds or letters of credit from Union State Bank, numbers 1102 and 1103, dated August 5, 1991, in the of amounts of

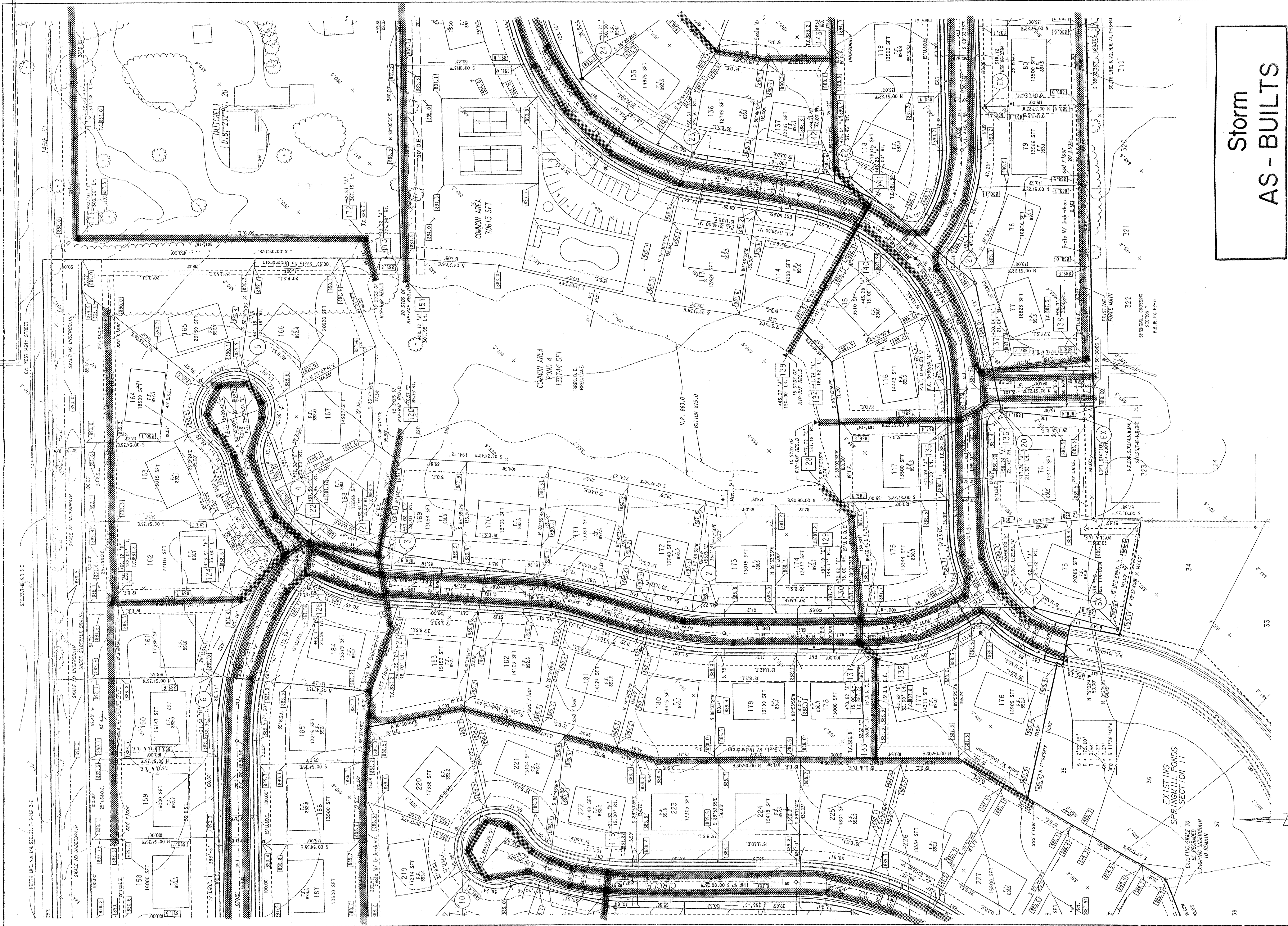
\$46,200.00 and \$18,550.00 have been released.

I recommend the drains construction as complete and acceptable.



Kenton C. Ward *SLW*
Hamilton County Surveyor
KCW/no

Village Farms Sec. 7



Storm AS - BUILTS

11th SITE DEVELOPMENT PLAN
SPRINGMILL PONDS
 SECTIONS III - IV

Scale: 1" = 50' Job No: 114-043 Sheet No: 2 of 10
 DGN: 495DF2 PRF: 495DF2

MSE Engineering
 MSE Corporation
 501 Congressional Boulevard
 Carmel, IN 46032
 317 843-5080 FAX 317 843-5089 FAX

DESIGNED BY: B.L.H.
 PREPARED BY: M.A.L.
 CHECKED BY: C.H.C.
 APPROVED BY: D.M.N.

Revisions and Dates:
 7-19-91 Add Existing Lots 159, 160, 225, 226
 7-19-91 Rev. Easement Lots 161 & 162
 7-19-91 Rev. Pond Signage
 7-19-91 Add H.F., J.W., P.H. Parcel
 7-25-91 Rev. LSE to S.D.E.
 8-19-91 Rev. Lateral Location for Pond Area

DATE: JUNE 7, 1991

Village Farms Sec. M

SECTIONAL PLATS SECTIONS III - IV
STRUCTURE DATA TABLE

STRUCTURE	MANUFACTURE TYPE	MANUFACTURE TYPE	MANUFACTURE TYPE
14	R-177C-C	R-177C-C	R-177C-C
15	R-177C-C	R-177C-C	R-177C-C
16	R-177C-C	R-177C-C	R-177C-C
17	R-177C-C	R-177C-C	R-177C-C
18	R-177C-C	R-177C-C	R-177C-C
19	R-177C-C	R-177C-C	R-177C-C
20	R-177C-C	R-177C-C	R-177C-C
21	R-177C-C	R-177C-C	R-177C-C
22	R-177C-C	R-177C-C	R-177C-C
23	R-177C-C	R-177C-C	R-177C-C
24	R-177C-C	R-177C-C	R-177C-C
25	R-177C-C	R-177C-C	R-177C-C
26	R-177C-C	R-177C-C	R-177C-C
27	R-177C-C	R-177C-C	R-177C-C
28	R-177C-C	R-177C-C	R-177C-C
29	R-177C-C	R-177C-C	R-177C-C
30	R-177C-C	R-177C-C	R-177C-C
31	R-177C-C	R-177C-C	R-177C-C
32	R-177C-C	R-177C-C	R-177C-C
33	R-177C-C	R-177C-C	R-177C-C
34	R-177C-C	R-177C-C	R-177C-C
35	R-177C-C	R-177C-C	R-177C-C
36	R-177C-C	R-177C-C	R-177C-C
37	R-177C-C	R-177C-C	R-177C-C
38	R-177C-C	R-177C-C	R-177C-C
39	R-177C-C	R-177C-C	R-177C-C
40	R-177C-C	R-177C-C	R-177C-C
41	R-177C-C	R-177C-C	R-177C-C
42	R-177C-C	R-177C-C	R-177C-C
43	R-177C-C	R-177C-C	R-177C-C
44	R-177C-C	R-177C-C	R-177C-C
45	R-177C-C	R-177C-C	R-177C-C
46	R-177C-C	R-177C-C	R-177C-C
47	R-177C-C	R-177C-C	R-177C-C
48	R-177C-C	R-177C-C	R-177C-C
49	R-177C-C	R-177C-C	R-177C-C
50	R-177C-C	R-177C-C	R-177C-C
51	R-177C-C	R-177C-C	R-177C-C
52	R-177C-C	R-177C-C	R-177C-C
53	R-177C-C	R-177C-C	R-177C-C
54	R-177C-C	R-177C-C	R-177C-C
55	R-177C-C	R-177C-C	R-177C-C
56	R-177C-C	R-177C-C	R-177C-C
57	R-177C-C	R-177C-C	R-177C-C
58	R-177C-C	R-177C-C	R-177C-C
59	R-177C-C	R-177C-C	R-177C-C
60	R-177C-C	R-177C-C	R-177C-C
61	R-177C-C	R-177C-C	R-177C-C
62	R-177C-C	R-177C-C	R-177C-C
63	R-177C-C	R-177C-C	R-177C-C
64	R-177C-C	R-177C-C	R-177C-C
65	R-177C-C	R-177C-C	R-177C-C
66	R-177C-C	R-177C-C	R-177C-C
67	R-177C-C	R-177C-C	R-177C-C
68	R-177C-C	R-177C-C	R-177C-C
69	R-177C-C	R-177C-C	R-177C-C
70	R-177C-C	R-177C-C	R-177C-C
71	R-177C-C	R-177C-C	R-177C-C
72	R-177C-C	R-177C-C	R-177C-C
73	R-177C-C	R-177C-C	R-177C-C
74	R-177C-C	R-177C-C	R-177C-C
75	R-177C-C	R-177C-C	R-177C-C

GENERAL NOTES:

1. Structures along curb line are attached to the middle of the structure and extend to the middle of the structure.
2. All structures are to be constructed with a minimum of 12" concrete walls and a minimum of 12" concrete floors.
3. All structures are to be constructed with a minimum of 12" concrete walls and a minimum of 12" concrete floors.
4. All structures are to be constructed with a minimum of 12" concrete walls and a minimum of 12" concrete floors.
5. All structures are to be constructed with a minimum of 12" concrete walls and a minimum of 12" concrete floors.
6. All structures are to be constructed with a minimum of 12" concrete walls and a minimum of 12" concrete floors.
7. All structures are to be constructed with a minimum of 12" concrete walls and a minimum of 12" concrete floors.

GRAVING GENERAL NOTES:

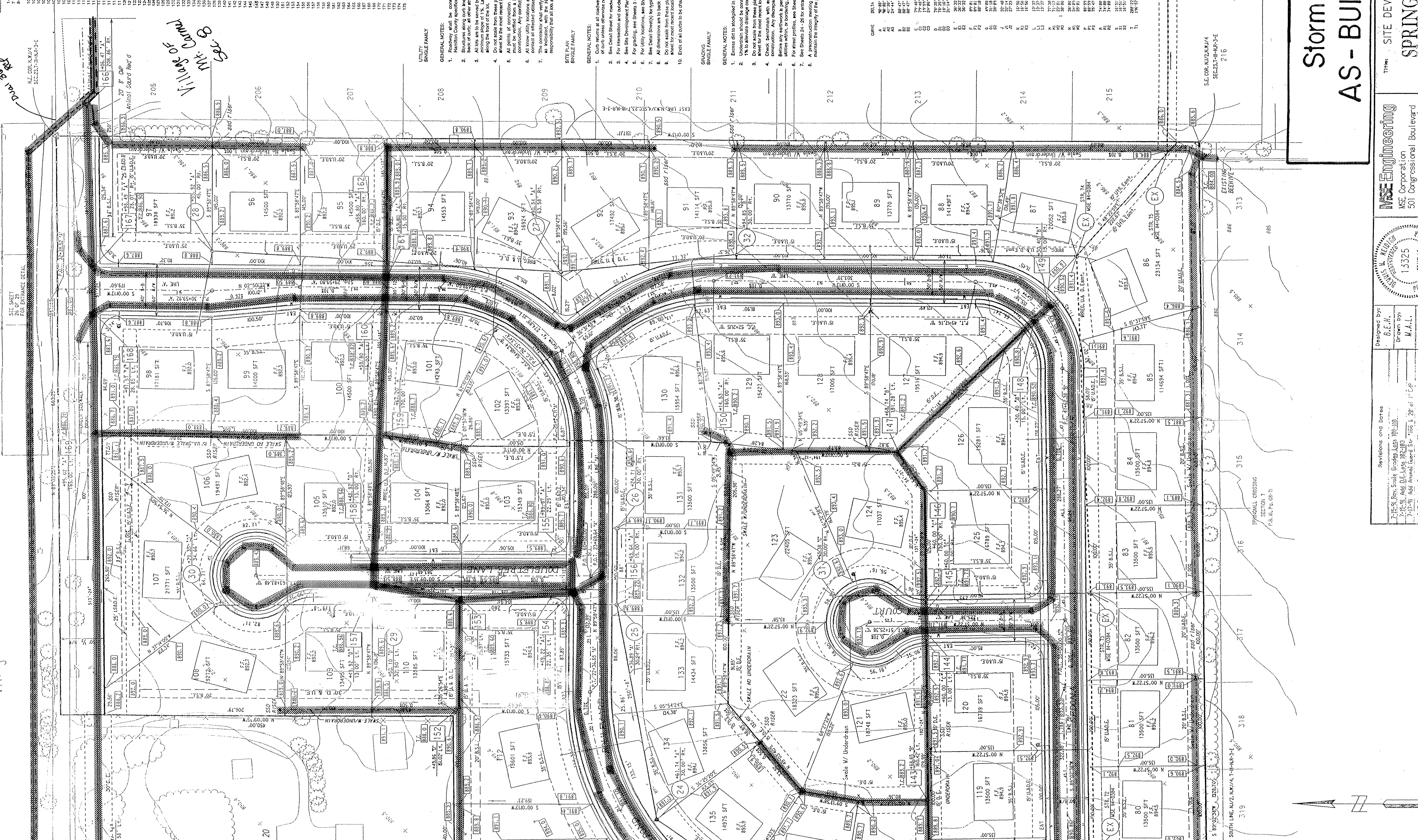
1. Erosion ditch to be installed in areas as designated by the designer.
2. 1% to alleviate drainage concerns.
3. Do not scale from these plans for survey field locations. Refer to the master coordinate system for the most recent locations and coordinates.
4. Before any earthwork is performed, the contractor is responsible for locating all existing utilities within or bounding the project.
5. For street profiles, see Sheets 6 through 14.
6. See Sheets 24-25 for entrance, egress and exit details.
7. All structures are to be constructed with a minimum of 12" concrete walls and a minimum of 12" concrete floors.

GENERAL NOTES:

1. Curb returns at all roadway intersections to have a radius of 20' measured to the back of curb unless otherwise noted.
2. See Detail Sheet for roadway cross section and pavement section.
3. For intersection and driveway details see Sheets 24-25.
4. For utility details see Sheets 3-5.
5. For utility details see Sheets 3-5.
6. See Detail Sheet for utility details.
7. All dimensions are to back of curb unless otherwise noted.
8. Do not scale from these plans for survey field locations. Refer to the master coordinate system for the most recent locations and coordinates.
9. Erosion ditch to be installed in areas as designated by the designer.
10. 1% to alleviate drainage concerns.

SPECIALTY PROPS

CURVE DATA	DELTA	ARC LENGTH	CHORD	BEARING
A	90.00	157.08	157.08	90.00
B	90.00	157.08	157.08	90.00
C	90.00	157.08	157.08	90.00
D	90.00	157.08	157.08	90.00
E	90.00	157.08	157.08	90.00
F	90.00	157.08	157.08	90.00
G	90.00	157.08	157.08	90.00
H	90.00	157.08	157.08	90.00
I	90.00	157.08	157.08	90.00
J	90.00	157.08	157.08	90.00
K	90.00	157.08	157.08	90.00
L	90.00	157.08	157.08	90.00
M	90.00	157.08	157.08	90.00
N	90.00	157.08	157.08	90.00
O	90.00	157.08	157.08	90.00
P	90.00	157.08	157.08	90.00
Q	90.00	157.08	157.08	90.00
R	90.00	157.08	157.08	90.00
S	90.00	157.08	157.08	90.00
T	90.00	157.08	157.08	90.00



Storm AS-BUILTS

THE SITE DEVELOPMENT PLAN
SPRINGMILL PONDS
SECTIONS III - IV

Scale: 1" = 50'
Job No: 114-0491
Sheet No: 3 of 10
DGN: 4950FP
PRF: 4950FP

REVISEMENTS AND NOTES:

- 7-15-91 Rev. Scale Grades Lots 110-119
- 7-15-91 Add DE Lots 102-103
- 7-17-91 Add Annual Guard Str 116E & 20' of 116E
- 7-19-91 Add Easement Lots 128 & 131
- 7-19-91 Rev. Area and Detail Lots 128 and 131
- 7-25-91 Rev. USE TO AS & DE

Designed by: B.F.H.
Drawn by: M.A.L.
Checked by: [Signature]
Approved by: D.M.M.Date: JUNE 7, 1991

PROFESSIONAL SEAL:
13325
STATE OF INDIANA
REGISTERED PROFESSIONAL ENGINEER

USE Engineering
USE Corporation
501 Congressional Boulevard
Suite 110
Carmel, IN 46032
317 843-5080
317 843-5089 FAX